

fruit set



THE EFFECTS OF KELPAK ON FRUIT SET

Kelpak is globally recognised by scientists and producers as a biostimulant that stimulates sustained beneficial reactions in crops. This includes improvement in root and foliage growth, higher stress tolerance and ultimately increased yields.

Studies have shown that Kelpak stimulates the germination of pollen grains and pollen tube growth, which improves fertilisation and fruit set.

Boron deficiency in floral parts will stimulate the activity of the enzymes that naturally break down auxins found in the floral parts.

Low levels of auxins lead to poor pollen tube growth and, consequently, poor fruit set. For optimum results, any boron deficiency must be corrected before or together with Kelpak application.

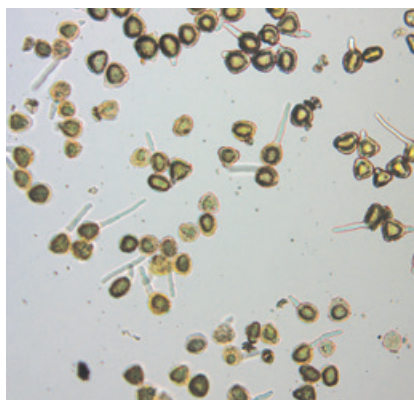


Kelpak, a natural biostimulant manufactured from fresh *Ecklonia maxima* seaweed. Scientifically proven to improve the health, quality and yields in a wide variety of crops.

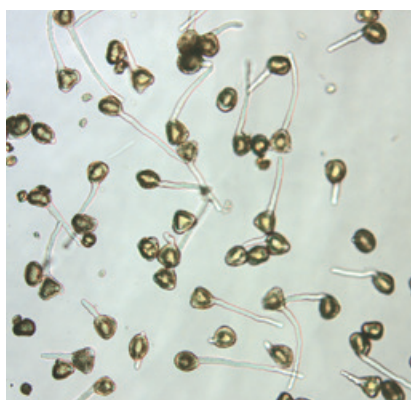
A global leader in seaweed products for over forty years



Improved germination and pollen tube growth

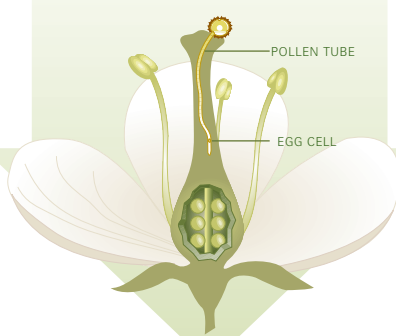


Control

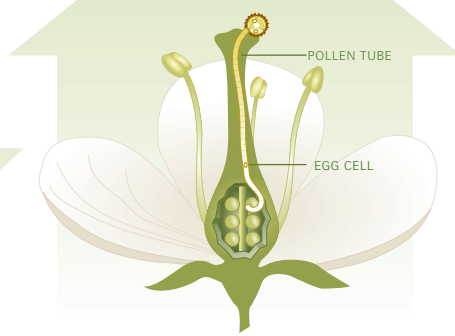


Kelpak

POOR POLLEN TUBE DEVELOPMENT
POOR FERTILISATION
POOR FRUIT SET - LOW YIELD



HIGH AUXIN CONTENT
IMPROVED FRUIT SET, BETTER FERTILISATION
IMPROVED YIELD



Improvement with Kelpak above standard practice

Crop	Fruit per plant	Increase per ha
Almonds	+ 15%	+ 21%
Cherries	+ 23%	+ 22%
Plums	+ 17%	+ 17%
Walnuts	+ 13%	+ 22%
Avocado	+ 13%	+ 8%
Tomato	+ 26%	+ 23%
Melon	+ 14%	+ 15%
Peppers	+ 20%	+ 18%
Beans	+ 24%	+ 31%

RECOMMENDED APPLICATION RATE

Kelpak foliar spray

Apply Kelpak from bloom initiation to fruit set.
Repeat once or twice at 10 to 12 day intervals

Application rate

3 L/ha (0.3% minimum)

For optimum results correct boron deficiency
before or together with Kelpak application

Kelpak is manufactured
using the unique cold
Cellburst extraction process



Kelpak